

ALLTY 500 USER MANUAL

ACCESSORY/STRUCTURE



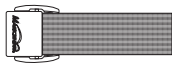
ALLTY 500



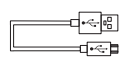
Handlebar mount



Helmet mount

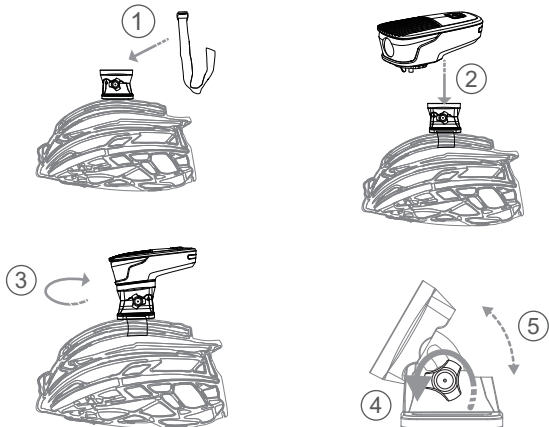
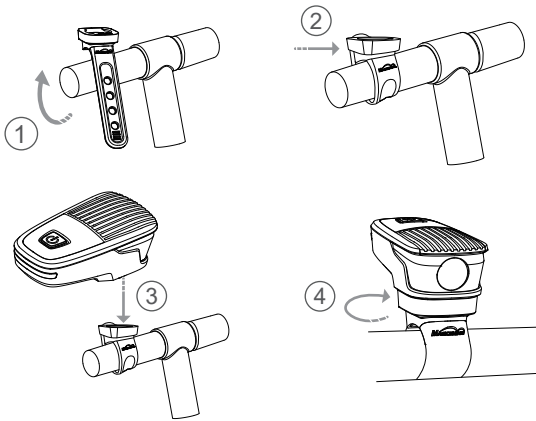


Mounting straps for helmet



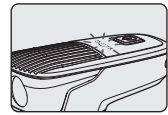
Micro USB Cable

HOW TO INSTALL



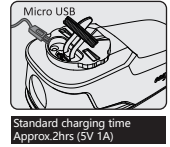
BATTERY INDICATOR

	GREEN	100%
	BLUE	50%
	RED	10%



HOW TO RECHARGE

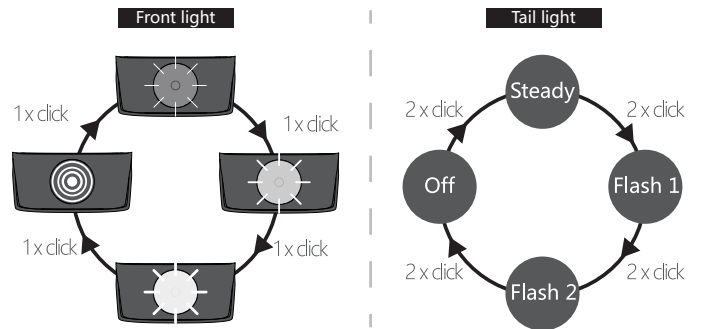
RED	GREEN
Charging	Fully charged



SWITCHING THE LIGHTING MODE

Click power button to turn on, hold 0.5s to turn off

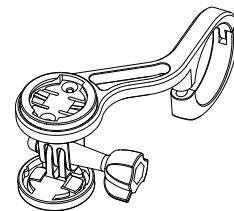
Front light mode memory: When you turn on the front light, it lights up in the last lighting mode you used.



LUMENS/RUN TIME

MODE	LOW	MID	HIGH	FLASH
	75	250	500	120
	08:30	02:50	01:30	05:00

OPTIONAL PARTS



TTA front mount

*Adaptable accessories (sold separately)

⚠ WARNING



EN WARRANTY

The Magicshine lighting system is warrantied for 24 months from the date of purchase.

If you register the lighting system on the Magicshine website you will receive a bonus 6 month warranty.

Battery packs and AC adapters have a 6 month warranty, however, there is no bonus warranty available.

The warranty is limited to defects in material and workmanship on the lighting system itself, the battery pack and the AC adapter.

The warranty is only valid if the affected parts have not been tampered with and there is no intentional damage. Please keep your proof of purchase in a safe place. Proof of purchase must be presented in the event of any claim. Please contact the specialist retailer from whom you purchased the device for complaint or warranty claim.

Alternatively, you can send your complaint or claim directly to Magicshine at

Tel: (+86) 755-295 536 69

Fax: (+86)755-275 897 77

E-mail: support@magicshine.com (order from Magicshine.com online store)

service@magicshine.com (order from other sales channels)

In the event of a justified warranty claim and delivery of a replacement device, you will only be entitled to a model available when replacing.

The manufacturer retains the right to make technical modifications.

ANSI FL 1 STANDARD

