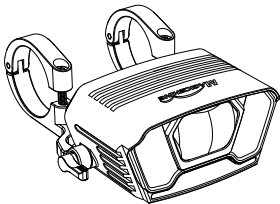


EN

MAGICSHINE®



APP PAIRING NAME: M2-B0
MONTEER 12000
USER MANUAL

⚠ WARNING

DANGER

1. To prevent inadvertent switching on, please unplug the connection cable between the light unit and the battery pack before transport or storage.
2. DO NOT shine the light directly into human eyes. This may cause temporary blindness or permanent damage to the eyes.

CAUTION

1. DO NOT leave the device or batteries exposed to a heat source or in a high-temperature location that may exceed 75°C, such as in the sun in an unattended vehicle.
2. DO NOT short-circuit the charging or discharging port with any metal objects.
3. DO NOT disassemble or modify the light or any of the included items, which could cause fire or death!

NOTICE

1. Fully recharge the light during long-time storage.
2. Please protect the lens surface from scratches, at this may affect the brightness output.



IN THE BOX



1*MONTEER 12000



1*MJ-6398
battery pack



1*MJ-6508 remote
control (incl. strap)



1*Helmet mount



1*Two-sided
handlebar mount



4*Nylon shims



1*Extension cable



2*Helmet
mounting straps



2*Battery
mounting straps



1*USB-C
charging cable



1*3mm hex key



1*Warranty card

OPERATING INSTRUCTIONS

REMOTE CONTROL PAIRING:

1. Before first use, please open the remote's battery compartment, remove the insulating spacer, reinsert the battery, then cover the battery compartment, and the indicator on the remote will flash blue.
2. Before pairing, be sure to connect the light unit and battery pack, then long press the light button for 1 second to turn the light on.
3. With the light on, press and hold the "○" and "□" buttons on the remote for about 10 seconds until the indicator alternately flashes blue to enter pairing mode. Then, put the remote close to the light until the indicators on the remote and light unit are constantly blue for 2 seconds.
4. Pairing is successful, and the remote control can work normally.

REMOTE CONTROL OPERATION:

ON/OFF: Press and hold the "○" or "□" button for 1 second

ADJUST BRIGHTNESS: Click the "○" button

CHANGE MODE: Double click the "○" button

FLASH MODE: Double click the "□" button

FULL OUTPUT MODE (12000LM): Click the "□" button to go into full output mode and click the "○" or "□" button to return to the previous mode.

*The remote control will enter sleep mode if the light is turned off for more than 48 hours without any operation. Click the light's button to activate it or long-press the light's button to turn it on, and the remote control will work normally.

LIGHT BUTTON OPERATION:

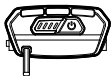
ON/OFF: Press and hold the button for 1 second

ADJUST BRIGHTNESS: Click the button

CHANGE MODE: Double click the button

CHARGING / BATTERY INDICATOR

Standard charging time approx. 3 hrs (20V=3A) /
9 hrs (12V=3A) / 11.5 hrs (9V=3A) / 16.5 hrs (5V=2A)



BATTERY INDICATOR:

1. Display the remaining power in real-time when the light is on, or click to display the power when the light is off.
2. When charging, the four LEDs will cycle through until the charging is completed.

	Four LEDs constant green: 100%-76%
	Three LEDs constant green: 75%-51%
	Two LEDs constant green: 50%-26%
	One LED constant green: 25%-11%
	One LED flashing red: 10%-1%

3. Press the "○" or "□" button on the remote control to display the remaining battery level of the battery pack.



Green: 100%-26%

Red: 25%-11%

Flashing red: 10%-1%

OUTPUT / RUNTIME

	ECO	300LM	85h
FLOODLIGHT MODE	LOW	800LM	35h
	MEDIUM	1500LM	19h
	HIGH	2500LM	10h
SPOTLIGHT MODE	ECO	1000LM	37h
	LOW	3000LM	11.5h
	MEDIUM	6000LM	7h
	HIGH	12000LM	2.5h
FLASH MODE	DAY FLASH	0-3000LM	121h
	NIGHT FLASH	800-3000LM	33h

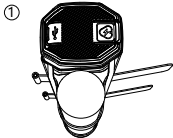
*The Day flash and Night flash can only be accessed through the remote control.

*The above are the factory default settings. To customize modes, please refer to the APP manual.

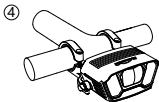
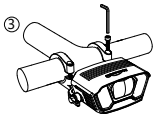
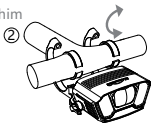
*All data are measured in accordance with ANSI/NEMA FL 1-2009. The test was conducted at a temperature of 25°C and a wind speed of 25 km/h. The runtime may vary depending on external temperature and ventilation conditions, and these deviations may affect the result of testing.

HOW TO INSTALL

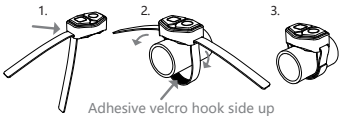
1. BATTERY PACK MOUNTING



2. INSTALL ON HANDLEBAR (The mount fits handlebar stems smaller than 70mm. Select the appropriate size shim for 31.8mm or 35mm handlebars.)



3. REMOTE CONTROL MOUNTING



4. INSTALL ON HELMET

